

FlexiTog[®]



CLOTHING page 12

CLOTHING CERTIFICATION

EN 342

The standard related to **garments for protection against cold** ranging from chill (-5°C) through to cold store (-25°C) to deep freeze (-40°C). The EN 342 standard is determined by three parameters (A-C) detailed below: The standard does not contain any specific requirements for head, hand or foot protection.

A. THERMAL INSULATION (WITH MOTION)

Indicates the thermal insulation of the garment in (m2.K/W), the higher the value the better the insulating properties. The (B) indicates that the item has been tested with thermal undergarments.

B. AIR PERMEABILITY

This indicates breathability of a garment, (1 highest, 3 lowest) breathability. A high air permeability allows for proper dry evaporative heat loss required to keep you warm and comfortable.

C. WATERPROOF PENETRATION

Determines waterproof properties - this is not a requirement as garments being used in sub zero temperatures do not require waterproofing capabilities.



EN 342

0,000 (B)	X	X
A.	B.	C.

FOOTWEAR CERTIFICATION

EN 20345

The standard protection for professional safety footwear.

There is a qualifying test which all safety footwear must pass and then other additional tests relating to additional safety aspects of the boot.



FOOTWEAR page 76

E. SHORT CODE CATEGORIES

- SB** Toe protection to 200J
- SB-P** As above with a penetration resistant sole
- S1** Upper from material other than all rubber or polymeric +Closed seat region +SB+A+E
- S1-P** As above with the addition of a penetration resistant sole
- S2** Has met all S1 Requirements with the addition of WRU (Water-resistant upper)
- S3** Has met all requirements for both S1 & S2 and also includes P (penetration resistant sole) and cleated outer soles

OPTIONAL CATEGORIES

- HRO** Heat resistant outsole compound tested at 300°C
- P** Penetration resistant outsole tested at 1100 Newtons force
- A** Electrical resistance between foot and ground of between 0.1 and 1000 Mega Ohms
- C** Electrical resistance between foot and ground of less than 0.1 Mega Ohms
- CI** Insulation against cold
- HI** Insulation against heat
- E** Energy absorption of the seat region tested at 20 joules
- WRU** Water resistant upper leather

- I** Insulating footwear
- AN** Ankle protection
- WR** Water resistant footwear
- CR** Cut resistant footwear
- M** Metatarsal protection (100J)

F. INSULATION (COLD)

Upper is tested for its insulating properties. The standard test temperature is -17°C

G. SLIP RESISTANCE

- SRA** Minimum CoF of 0.28 in the heel and 0.32 tested flat using a pressed clay tile floor surface with Sodium Lauryl Sulphate lubricant
- SRB** Minimum CoF of 0.13 in the heel and 0.18 tested flat using a stainless steel floor surface with Glycerol lubricant
- SRC** Has met requirements of both SRA & SRB



EN 20345:2011

S3 CI SRA

E. F. G.



GLOVES page 50

GLOVE CERTIFICATION

EN 388

The EN 388 is the standard related to **protection levels for safety gloves**. This certificate assess the glove protection levels for abrasion, blade cuts, tears and punctures.

EN 511

Focused on **protecting hands against cold** and is based on thermal resistance to convective and contact cold, with an optional test for water permeability.

H. ABRASION

This tests how many revolutions it takes to create a hole, with an abrasive material under a stipulated pressure. Rated from (1-4), 4 being the most resistant.

I. BLADE CUT

This tests the number of cycles for a blade, running at a constant speed, to cut through the material. Rated from (1-4), 4 being the most resistant to cuts.

J. TEAR

This tests the amount of force (N) required to tear the glove. Rated from (1-4), 4 being the most resistant.

K. PUNCTURE

This tests the amount of pressure required to puncture material with a standard size point. Rated from (1-4), 4 being the most resistant.

L. CUT

If the knife gets dull during the coup test, see point B, this test shall be performed instead. The result is given by a letter, A to F, where F indicates the highest protection.

M. IMPACT

If the glove has an impact protection, this information is given by the letter P as the 6th and last sign. If no P sign, no impact protection is claimed.

N. CONVECTIVE (COLD)

This measures the transfer of cold via convection and is rated from (0-4), 4 being the most resistant.

O. CONTACT (COLD)

This measures the thermal resistance when the glove is in contact with a cold object. Rated from (0-4), 4 being the most resistant.

P. WATER PERMEABILITY

This measures the gloves resistance to water penetration. Water penetration rated as (1) no water penetration rated as (0).



EN 388

X	X	X	X	X	X
H.	I.	J.	K.	L.	M.



EN 511

X	X	X
N.	O.	P.



FlexiTog[®]

CARE INSTRUCTIONS

GARMENT WASHING GUIDE

Washing instructions and garment code can be found in the centre of the information label inside the garment, as shown. This guide covers FlexiTog branded garments only. Information provided here is intended as a guide.



MACHINE WASHING SYMBOLS

Great care should be taken when laundering FlexiTog products; follow the symbols:



MACHINE WASH COLD

Initial water temperature should not exceed 30°C or 65 to 85°F.



MACHINE WASH WARM

Initial water temperature should not exceed 40°C or 105°F.



DO NOT BLEACH

Garment is not colour-fast or structurally able to withstand any bleach products.



DO NOT IRON

Item material is not suitable to be smoothed or finished with an iron.



IRON LOW

Regular ironing, steam or dry, performed at Low setting (110°C, 230°F) only.



IRON MEDIUM

Regular ironing, steam or dry, performed at Medium setting (150°C, 300°F).



DO NOT DRY-CLEAN

Garment may not be commercially dry-cleaned.



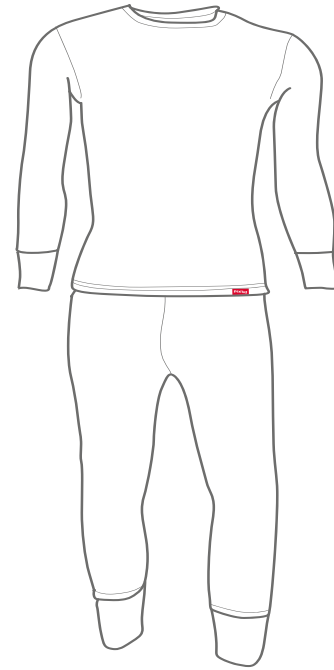
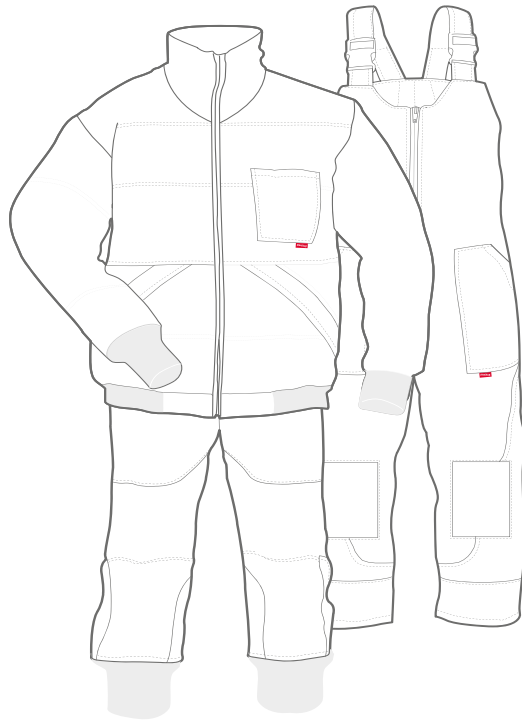
TUMBLE DRY LOW

A machine dryer may be regularly used at a Low Heat setting.



DRY FLAT

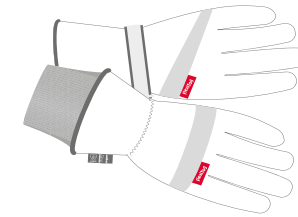
A machine dryer may be regularly used at a Low Heat setting.



HEADWEAR

FH75 FH88 FH89 FH90
FH91 FH92 FH94 FH96

- Hand wash with cool water
- No bleach
- Dry flat



GLOVES

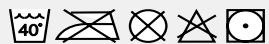
ALL GLOVES

It is generally recommended that gloves should not be washed and only wiped down with a cool wet cloth. If washing is absolutely necessary then the following points should be adhered to.

- Hand wash with cool water
- No bleach
- Dry flat

FREEZER WEAR

ALL JACKET & TROUSERS



- Machine wash - Warm (40°C)
- Do NOT Iron, Dry-clean, Bleach
- Tumble Dry - Low

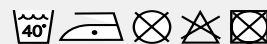
THERMALS

X30SS X30LS X30LJ (WHITE)



- Machine wash - Cool (30°C)
- Iron Medium
- Do NOT Dry-clean, Bleach, Tumble Dry

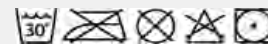
X50SS | X50LS | X50LJ (BLACK)



- Machine wash - Warm (40°C)
- Iron Medium
- Do NOT Dry-clean, Bleach, Tumble Dry

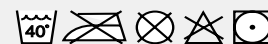
SOCKS

XS82 XS86



- Machine wash - Cool (30°C)
- Do NOT Iron, Dry-clean, Bleach
- Tumble Dry - Low

XS84



- Machine wash - Warm (40°C)
- Do NOT Iron, Dry-clean, Bleach
- Tumble Dry - Low



SIZING GUIDE

CLOTHING

MEASURING GUIDE

Always measure against the body including any undergarments (thermals etc) that would be worn under the outer garments.

MEASURING YOUR CHEST

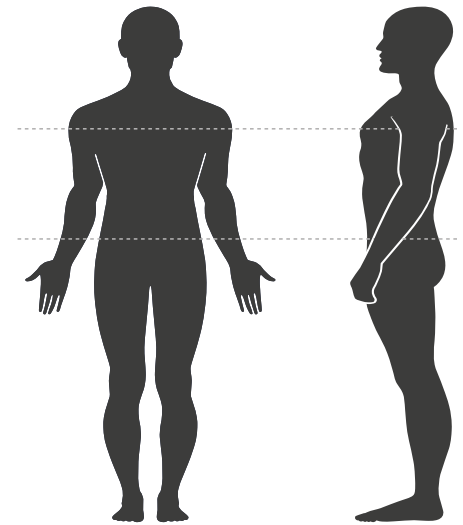
Measurements should be taken from under the arm at the fullest part around the chest horizontally around the full girth of your body.

MEASURING YOUR WAIST

With your feet placed together, measurements should be taken from around the natural hip line (put one finger between the tape and your body before you measure).

If in doubt go up a size!

MENS	WOMENS	CHEST INCHES	WAIST INCHES	CHEST CM	WAIST CM
XS	6	34	28	86.5	71
S	8	36	30	91.5	76
M	12	38	32	96.5	81.5
L	14	40-42	34-36	101.5-106.5	86.5-91.5
XL	16	44-46	38-40	112-117	96.5-101.5
2XL	18	48-50	42-44	122-127	106.5-112
3XL	20	52-54	46-48	132-137	117-122
4XL	22	58-59	50-52	142-147.5	127-132
5XL	24	60-62	54-56	152.5-157.5	137-142
6XL	26	64-66	58-60	162.5-167.5	147.5-152.5

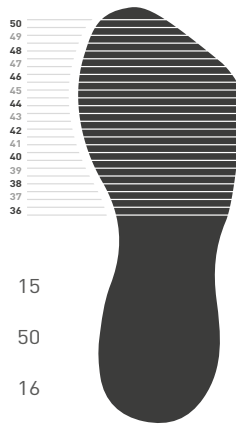


FOOTWEAR

MEASURING GUIDE

All our footwear conforms to the standard UK sizing convention.

UK	3	4	5	6	7	8	9	10	11	12	13	14	15
EURO	36	37	38	39	41	42	43	44	46	47	48	49	50
USA	4	5	6	7	8	9	10	11	12	13	14	15	16



GLOVES

WHICH HAND?

Measure the diameter at the knuckles of your dominant hand.

THE RIGHT FIT

Gloves that are too tight will result in cold hands, so if in doubt go up a size!

SIZE	CM	INCHES
XS	15	6
S	18	7
M	20	8
L	22.5-25.5	9-10
XL	28	11
2XL	30.5	12

